



7077-12" in Textured Black (TB)



7077 LED

BRICK-OD EXT (Extend) is a complementary offering to the standard version (Model #: 7075), featuring an extended housing which allows for field-drilled conduit entry, as well as integral battery backup (including cold weather battery) in both sizes. Additionally, this unit features simplified rapid installation as it requires minimal disassembly. Exceptionally versatile with an architecturally refined aesthetic, this unit is perfect for exterior facades, entryways, columns, breezeways, and more.

FINISHES



BRICK-OD EXT

FOR STANDARD VERSION, REFER TO MODEL #: 7075

STANDARD SPECIFICATIONS - EXTENDED HOUSING (7077)

OUTER FRAME & MOUNT PLATE

Formed and welded aluminum. No exposed hardware on sides or bottom of fixture.

DIFFUSER

UV stabilized frosted acrylic diffuser with optical properties which throw light forward.

LED PERFORMANCE - 3500K STANDARD - TYPE 2 DISTRIBUTION

120-277V - 3500K, L80 rating - 60,000 hrs - L70 rating (projected) - 100,000 hrs

Amperage rated @ 110V input

Operating ambient temperature: -20°C / -4°F - 50°C / 122°F

Delivered 3500K lumens noted. Consult Brownlee.com for performance of all CCTs.

13 Size: H08 - 8W nominal, .07 A input - 860 lm. Dimmable (0-10V). 90+ CRI Standard.

13 Size: H16 - 16W nominal, .14 A input - 1490 lm. Dimmable (0-10V). 90+ CRI Standard.

13 Size: H21 - 21W nominal, .18 A input - 1725 lm. Dimmable (0-10V). 90+ CRI Standard.

24 Size: H16 - 16W nominal, .14 A input - 1470 lm. Dimmable (0-10V). 90+ CRI Standard.

24 Size: H32 - 32W nominal, .27 A input - 3030 lm. Dimmable (0-10V). 90+ CRI Standard.

24 Size: H41 - 41W nominal, .35 A input - 3410 lm. Dimmable (0-10V). 90+ CRI Standard.

MOUNTING

Simply fasten mount plate to 4x4 j-box or anchor to wall (hardware by others).

Attach extended housing to mount plate using provided fasteners. Must be positioned in downward orientation (light source facing down) if mounting outdoors.

Extended housing may be field-drilled for conduit entry (any direction). Use a water-tight conduit fitting (by others) if outdoors. Non-returnable once drilled.

FINISH

Durable corrosion resistant powder coat finish.

Custom colors available, contact factory.

WARRANTY

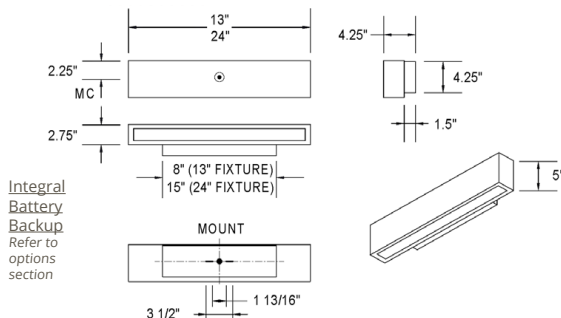
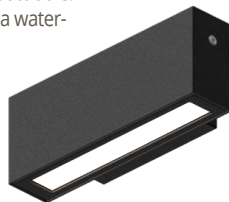
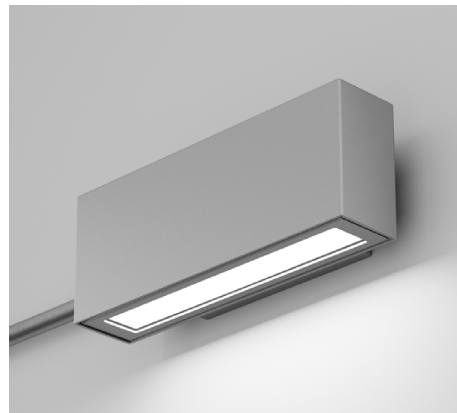
5 year limited warranty on this LED product.

Consult factory for details.

PROJECT:

MODEL #:

FIXTURE TYPE:



WET

RoHS
COMPLIANT
ELECTRONICS



ORDERING INFORMATION

7077

Model

2.

3.

4.

5.

6.

2. SIZE

13 L: 13"
24 L: 24"

3. FINISH

TB Textured Black
TZ Textured Bronze
TG Textured Grey
TW Textured White

CUSTOM

Additional finishes available as a modified option. Refer to Brownlee's [Finishes webpage](#) for inspiration.

4. WATTAGE

13 SIZE

H08 08W H Series LED
H16 16W H Series LED
H21 21W H Series LED

24 SIZE

H16 16W H Series LED
H32 32W H Series LED
H41 41W H Series LED

5. COLOR TEMPERATURE

30K 3000K color temperature
35K 3500K color temperature
40K 4000K color temperature

*DarkSky approved when ordered with 3000K.

6. AVAILABLE OPTIONS

2CT Two Circuits, Two LEDs, Two Drivers - for redundancy requirements (H16, H21, H32, H41 wattages only). Does not include two batteries when combined with BBI/BBC.

BAB¹ Build America, Buy America Compliant (BABAA) (Exclusions: BBI, BBC - contact factory)

BAC¹ Buy American Compliant (BAA)

BBI² Integral Battery Backup - 10W (32F minimum)

BBC² Integral Battery Backup, Cold Weather - 15W (-4F minimum)

Battery must be connected to continuous power supply within 7 Mo. of shipping. [See Warranty Note 3.](#)

DTR⁴ Triac (Line Voltage) Dimming (120V) (Cannot be combined with BBI/BBC)

FCL⁷ French Canadian Label

PO1 Photo Control (120V)

PO2 Photo Control (208, 240, 277V)

Universal Footnotes (only applies if superscript is shown in Options section): (0) 90R - All LEDs/CCTs are being transitioned to 90 CRI standard over 2025. Inquire for this model's availability. (1) BAC/BAB - [www.brownlee.com/resources/usa](#). (2) BBI/BBC - cannot combine with ECW or EXT. (3) BLD - integral microwave motion sensor (step-dim). Cannot combine with DTR. (4) DTR - cannot combine with BLD. (5) ECW - cannot combine with BBI, BBC, or DTR. (7) FCL - cannot combine with BAC. (8) OCC - integral microwave motion sensor (ON/OFF). (9) T24 - includes JA8 labeling and 90 CRI LEDs. (10) PCH/PC4 - cannot combine with BLD or OCC.

Add'l Notes: *BBI/BBC - BBI minimum operating temp: 10C/50F unless otherwise stated. BBC minimum operating temp: -20C/-4F.

**BLD - integral microwave motion sensor with step-dim control. 1: Motion is detected, illuminate to 100%.

2: Motion no longer detected, dim to set level. 3: Remain in continuous dimmed state or turn off after set period. Config. via onboard dip switches.

Specifications subject to change without notice.



BROWNLEE
LIGHTING

[www.brownlee.com](#)

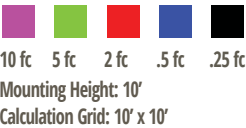
REVISED
2025.08.08

BRICK-OD EXT

FOR STANDARD VERSION, REFER TO MODEL #: 7075

PHOTOMETRIC DATA - For theoretical reference only. Data subject to change without notice.

ISOFOOTCANDLE PLOT LEGEND



POLAR GRAPH LEGEND

- # 1 - Vertical Plane Through Horizontal Angles (5 - 185) (Through Max. Cd.)
- # 2 - Vertical Plane Through Horizontal Angles (90 - 270)
- # 3 - Horizontal Cone Through Vertical Angle (17.5) (Through Max. Cd.)

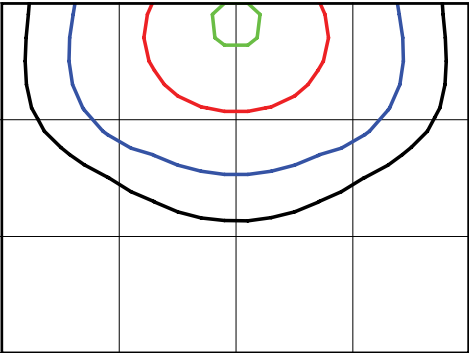
PROJECT:
MODEL #:
FIXTURE TYPE:

PHOTOMETRIC DATA

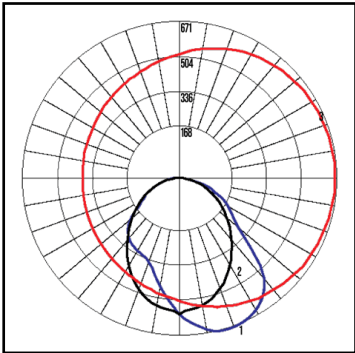
ADDITIONAL LUMEN PACKAGES AVAILABLE. CONTACT FACTORY FOR SUPPORTING PLOTS OR REFER TO IES FILES ONLINE.

Model: 7077-12-H16-35K / QTY: 1
Description: 12" Size, 16W, 1490 lm

ISOFOOTCANDLE PLOT



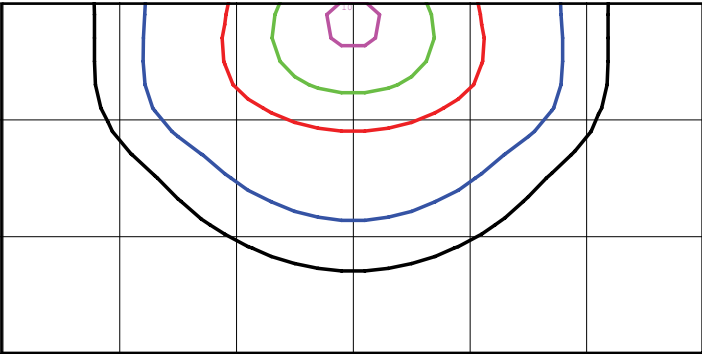
POLAR GRAPH



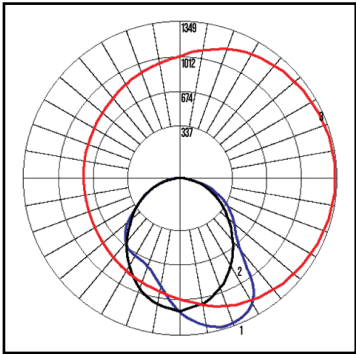
BUG RATING
B1-U0-G1
DISTRIBUTION
TYPE 2

Model: 7077-24-H32-35K / QTY: 1
Description: 24" Size, 32W, 3030 lm

ISOFOOTCANDLE PLOT



POLAR GRAPH



BUG RATING
B1-U0-G1
DISTRIBUTION
TYPE 2

2: Motion no longer detected, dim to set level. 3: Remain in continuous dimmed state or turn off after set period. Cor
Specifications subject to change without notice.