

# HANOVER [SWIRL]

**\*WILL BE DISCONTINUED SOON**  
CONTACT FACTORY FOR AVAILABILITY

PROJECT:
MODEL #:
FIXTURE TYPE:

## STANDARD SPECIFICATIONS

### PAN

The classic decorative layered look in a 20 GA cold rolled steel spinning.

### DIFFUSER

Formed glass, with a white finished interior and an etched outer surface softens the light. The diffuser is held in place by a cold rolled steel check ring, and a solid brass ball finial.

### LED PERFORMANCE - 3500K STANDARD

120-277V - 3500K, 82 CRI - L80 rating - 60,000 hrs - L70 rating (projected) - 100,000 hrs  
Amperage rated @ 110V input  
Operating ambient temperature: -20°C / -4°F - 40°C / 104°F

Delivered 3500K lumens noted. Consult Brownlee.com for performance of all CCTs.  
B12 - 12W nominal, .10 A input - 761 lm. Dimmable (0-10V).

### MOUNTING

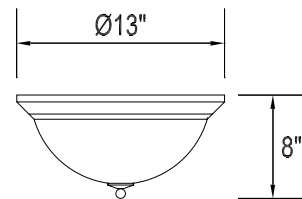
Directly to j-box (by others). Mounting hardware included.

### FINISH

The 2125 series is finished in either electroplated brush nickel or high reflectance white powder coat. Also available in all Brownlee paint finishes. Plated finishes such as Brushed Nickel are suitable for indoor applications only. Installation outdoors voids the Brownlee Limited Warranty.

### WARRANTY

5 year limited warranty on this LED product. Consult factory for details.



**DAMP**



## ORDERING INFORMATION

**2125** - \_\_\_\_\_  
Model                      2.                      3.                      4.                      5. (if required)

### 2. FINISH

**STANDARD**  
**BN**      Brushed Nickel

**OPTIONAL**  
**BL**      Black  
**BZ**      Bronze  
**GM**      Gun Metal  
**MB**      Metallic Bronze  
**MG**      Metallic Gold  
**NT**      Nickel Tone  
**PL**      Platinum  
**WH**      White

**CUSTOM**  
Provide color sample or RAL code to match

### 3. WATTAGE

**13 SIZE**  
**B12**      12W B Series LED

### 4. COLOR TEMPERATURE

**35K**      3500K standard color temperature  
**27K**      2700K color temperature  
**30K**      3000K color temperature  
**40K**      4000K color temperature

### 5. AVAILABLE OPTIONS

**90R<sup>0</sup>**      90 CRI (3000K only)  
**BAC<sup>1</sup>**      Buy American Compliant  
**DTR<sup>4</sup>**      Triac (Line Voltage) Dimming (120V)  
**ES<sup>6</sup>**      ENERGY STAR<sup>®</sup> (Not available in 90 CRI)  
**FCL<sup>7</sup>**      French Canadian Labels  
**T24<sup>9</sup>**      Title 24 Compliant (B12 in 3000K only)

**Notes:** (0) **90R** - cannot be combined with ES or T24 (1) **BAC** - cannot be combined with FCL (2) **BBI/BBS/BBC** - cannot be combined with DTR, ECW, EXT, or T24 (3) **BLD** - cannot be combined with DTR, OCC, or T24 (4) **DTR** - cannot be combined with BBI, BBC, BBS, BLD or T24 (5) **ECW** - cannot be combined with BBI, BBC, or DTR (6) **ES** - cannot be combined with 90R, FCL, or T24 (7) **FCL** - cannot be combined with BAC, ES, or T24 (8) **OCC** - cannot be combined with BLD (9) **T24** - cannot be combined with 90R, BBI, BBC, BBS, BLD, DTR, ES, or FCL (10) **BBS** - cannot be combined with BLD, DTR, ECW, EXT, OCC, or T24 (11) **PCH/PC4** - cannot be combined with BLD or OCC

**Add'l Notes:** \***BBI/BBS/BBC** - standard BBI (and BBS) option has a minimum operating temperature of 10C/50F. BBC option has a minimum operating temperature of -20C/-4F. \*\***BLD** - Bi-Level Dimming is field adjustable from 100% to a dimmed light level of 10, 20, 30, or 50%. All units are factory set at 50%.

## Specifications and dimensions subject to change without notice.

Consult your Brownlee Lighting representative for availability and ordering information.

