



## 2081 LED

An architectural solution for the specification market yet affordable enough for everyday projects. Two sizes. Three diffuser options. No exposed hardware. Refer to model 2681 for a suspended version of this product. Custom finishes available.

## TRIM FINISHES



# METRO

## STANDARD SPECIFICATIONS

### HOUSING

Cold rolled 20 GA steel, formed with die punch tooling with no exposed hardware. The pan has three steel brackets which mate with the diffuser. Reveal (RVL) option available: 3/4" decorative extension collar lifts the luminaire from the mounting surface to accentuate its shape and create a floating effect with a subtle shadow.

### DIFFUSER

Translucent, UV stabilized, white acrylic. Diffuser is vacuum formed and features a secure "twist lock" tool free installation method.

### MOUNTING

Directly to j-box (by others). Mounting hardware included.

### FINISH

The standard finish is a sturdy electroplated brushed nickel. Options include all Brownlee paint finishes. Plated finishes such as Brushed Nickel are suitable for indoor applications only. Installation outdoors voids the Brownlee Limited Warranty.

PROJECT:

MODEL #:

FIXTURE TYPE:

### WARRANTY

5 year limited warranty on this LED product. Consult factory for details.

### LED PERFORMANCE - 3500K STANDARD

120-277V - 3500K, 82 CRI - L80 rating - 60,000 hrs - L70 rating (projected) - 100,000 hrs  
Amperage rated @ 110V input

Operating ambient temperature: -20°C / -4°F - 40°C / 104°F

Delivered 3500K lumens noted. Consult Brownlee.com for performance of all CCTs.

B12 - 12W nominal, .10 A input - 918 lm. Dimmable (0-10V).

C17 - 16W nominal, .15 A input - 1327 lm. Dimmable (0-10V).

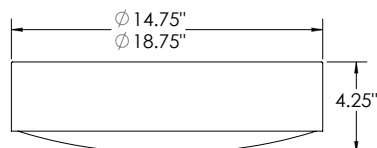
C24 - 23W nominal, .20 A input - 1821 lm. Dimmable (0-10V).

C37 - 35W nominal, .30 A input - 3428 lm. Dimmable (0-10V).

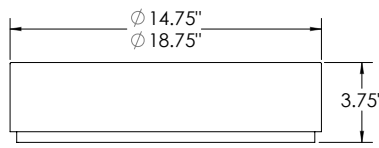
C49 - 45W nominal, .40 A input - 4223 lm. Dimmable (0-10V).



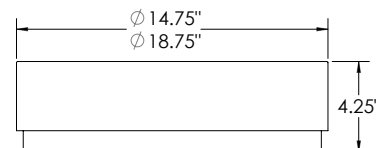
BN finish, RD2 diffuser



BN finish, FL2 diffuser



BN finish, FL1 diffuser



DAMP



## ORDERING INFORMATION

**2081** - Model - 2. - 3. - 4. - 5. - 6. - 7. (if required)

2. SIZE	3. FINISH	4. WATTAGE	5. DIFFUSER	7. AVAILABLE OPTIONS
15 14.75" dia 19 18.75" dia	<b>STANDARD</b> <b>BN</b> Brushed Nickel  <b>OPTIONAL</b> <b>BL</b> Black <b>BZ</b> Bronze <b>GM</b> Gun Metal <b>MB</b> Metallic Bronze <b>MG</b> Metallic Gold <b>NT</b> Nickel Tone <b>PL</b> Platinum <b>WH</b> White  <b>CUSTOM</b> Provide color sample or RAL code to match	<b>15 SIZE</b> <b>B12</b> 12W B Series LED <b>C17</b> 16W C Series LED <b>C24</b> 23W C Series LED  <b>19 SIZE</b> <b>C24</b> 23W C Series LED <b>C37</b> 35W C Series LED <b>C49</b> 45W C Series LED	<b>FL1</b> Style 1 Flat Diffuser* <b>FL2</b> Style 2 Flat Diffuser <b>RD2</b> Style 2 Round Diffuser*  *Does not meet ADA requirements.  <b>6. COLOR TEMPERATURE</b> <b>35K</b> 3500K standard color temperature <b>27K</b> 2700K color temperature <b>30K</b> 3000K color temperature <b>40K</b> 4000K color temperature	<b>90R<sup>0</sup></b> 90 CRI (3000K only) <b>BAC<sup>1</sup></b> Buy American Compliant <b>BBI<sup>2*</sup></b> Integral Battery Backup 15 size - B12 only 19 size - C24 only <b>BLD<sup>3**</sup></b> Bi-Level Dimming <b>DTR<sup>4</sup></b> Triac (Line Voltage) Dimming (120V) <b>ES<sup>6</sup></b> ENERGY STAR® (Not available in 90 CRI) <b>FCL<sup>7</sup></b> French Canadian Labels <b>OCC<sup>8</sup></b> Occupancy Sensor <b>RVL</b> Reveal (15 size only - matches selected finish) (Adds 3/4" to height) <b>T24<sup>9</sup></b> Title 24 JA8 Compliant (B12, C24 & C49 in 3000K only)

**Notes:** (0) 90R - cannot be combined with ES. (1) BAC - cannot be combined with FCL. (2) BBI/BBS/BBC - cannot be combined with ECW, EXT, or T24. (3) BLD - includes integral OCC sensor (do not combine with OCC option). Cannot be combined with DTR or T24. (4) DTR - cannot be combined with BLD or T24. (5) ECW - cannot be combined with BBI, BBC, or DTR. (6) ES - cannot be combined with 90R or T24. (7) FCL - cannot be combined with BAC or T24. (8) OCC - integral ON/OFF occupancy sensor. (9) T24 - includes JA8 labeling and 90 CRI LEDs (do not combine with 90R option). Cannot be combined with BBI, BBC, BBS, BLD, DTR, ES, or FCL. (10) BBS - cannot be combined with BLD, ECW, EXT, OCC, or T24. (11) PCH/PC4 - cannot be combined with BLD or OCC. **Add'l Notes:** \*BBI/BBS/BBC - standard BBI (and BBS) option has a minimum operating temperature of 10C/50F. BBC option has a minimum operating temperature of -20C/-4F. \*\*BLD - integral OCC sensor with onboard control. 1: Motion is detected, illuminate to 100%. 2: Motion no longer detected, dim to 50% (factory default), 30%, 20% or 10%. 3: Remain in continuous dimmed state (factory default) or turn off after set period.

**Specifications and dimensions subject to change without notice.**

Consult your Brownlee Lighting representative for availability and ordering information.