

CONVEX

STANDARD SPECIFICATIONS

TRIM

Cold rolled 20 GA, formed with spinning and die punch tooling. The assembly also features machined steel spacers and is assembled with solid brass hardware. The stem and canopy are both cold rolled steel.

DIFFUSER

Translucent, UV stabilized, white acrylic. Diffuser is injection molded allowing a uniform thickness of 0.06" throughout.

PAN

Cold rolled 20 GA steel, formed with die punch tooling. The pan is finished in a high reflectance white powder coat.

LED PERFORMANCE - 3500K STANDARD

120-277V - 3500K, 82 CRI - L80 rating - 60,000 hrs - L70 rating (projected) - 100,000 hrs

Amperage rated @ 110V input

Operating ambient temperature: -20°C / -4°F - 40°C / 104°F

Delivered 3500K lumens noted. Consult Brownlee.com for performance of all CCTs.

B06 - 6W nominal, .05 A input - 603 lm. Non-dimming.

B12 - 12W nominal, .10 A input - 1192 lm. Dimmable (0-10V).

C09 - 9W nominal, .10 A input - 841 lm. Dimmable (0-10V).

C17 - 16W nominal, .15 A input - 1723 lm. Dimmable (0-10V).

C24 - 23W nominal, .20 A input - 2364 lm. Dimmable (0-10V).

MOUNTING

Directly to j-box (by others). Mounting hardware included.

FINISH

The standard finish is a sturdy electroplated brushed nickel. Options include all Brownlee paint finishes. Plated finishes such as Brushed Nickel are suitable for indoor applications only. Installation outdoors voids the Brownlee Limited Warranty.

WARRANTY

5 year limited warranty on this LED product. Consult factory for details.

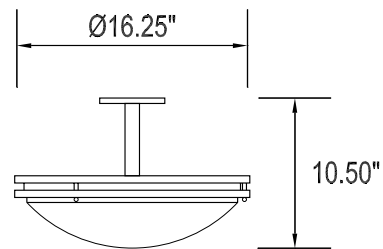
PROJECT:

MODEL #:

FIXTURE TYPE:



BN finish, WHA diffuser



ORDERING INFORMATION



DAMP



2057

Model

2.

3.

4.

5.

2. FINISH

STANDARD
BN Brushed Nickel

OPTIONAL
BL Black
BZ Bronze
GM Gun Metal
MB Metallic Bronze
MG Metallic Gold
NT Nickel Tone
PL Platinum
WH White

CUSTOM
Provide color sample or
RAL code to match

3. WATTAGE

B06 6W B Series LED
B12 12W B Series LED

C09 9W C Series LED
C17 16W C Series LED
C24 23W C Series LED

4. COLOR TEMPERATURE

35K 3500K standard color temperature
27K 2700K color temperature
30K 3000K color temperature
40K 4000K color temperature

5. AVAILABLE OPTIONS

90R⁰ 90 CRI (3000K only)
BAC¹ Buy American Compliant
BLD^{3}** Bi-Level Dimming (All except B06)
DTR⁴ Triac (Line Voltage) Dimming (120V)
(All except B06)
ES⁶ ENERGY STAR® (Not available in 90 CRI)
FCL⁷ French Canadian Labels
OCC⁸ Occupancy Sensor
T24⁹ Title 24 JA8 Compliant (B12 & C24 in 3000K only)

Notes: (0) 90R - cannot be combined with ES. (1) BAC - cannot be combined with FCL. (2) BBI/BBS/BBC - cannot be combined with ECW, EXT, or T24. (3) BLD - includes integral OCC sensor (do not combine with OCC option). Cannot be combined with DTR or T24. (4) DTR - cannot be combined with BLD or T24. (5) ECW - cannot be combined with BBI, BBC, or DTR. (6) ES - cannot be combined with 90R or T24. (7) FCL - cannot be combined with BAC or T24. (8) OCC - integral ON/OFF occupancy sensor. (9) T24 - includes JA8 labeling and 90 CRI LEDs (do not combine with 90R option). Cannot be combined with BBI, BBC, BBS, BLD, DTR, ES, or FCL. (10) BBS - cannot be combined with BLD, ECW, EXT, OCC, or T24. (11) PCH/PC4 - cannot be combined with BLD or OCC.
Add'l Notes: *BBI/BBS/BBC - standard BBI (and BBS) option has a minimum operating temperature of 10C/50F. BBC option has a minimum operating temperature of -20C/-4F. **BLD - integral OCC sensor with onboard control. 1: Motion is detected, illuminate to 100%. 2: Motion no longer detected, dim to 50% (factory default), 30%, 20% or 10%. 3: Remain in continuous dimmed state (factory default) or turn off after set period.

Specifications and dimensions subject to change without notice.

Consult your Brownlee Lighting representative for availability and ordering information.

 **BROWNLEE**
LIGHTING
www.brownlee.com

REVISED
2020.12.22