

# 7182

## STANDARD SPECIFICATIONS

### HOUSING

Formed aluminum design, welded for stability, and finished in a bronze powder coat.

### DIFFUSER

Injection molded clear prismatic polycarbonate, UV stabilized material that is resistant to damage due to the 0.085" base thickness. Available with a painted bronze cutoff to control light distribution.

### PAN

Cold rolled steel design, finished in a powder coat high reflectance white paint.

### ELECTRICAL

Quad CFL, 4-pin G24q Base 2700K lamp – 120-277V Electronic HPF Ballast  
 Triple CFL, 4-pin GX24Q Base 2700K lamp – 120-277V Electronic HPF Ballast  
 GU24 CFL, 2-prong Base 2700K lamp – 120V Electronic NPF Ballast  
 High Pressure Sodium, Medium Base – 120V Magnetic NPF Ballast

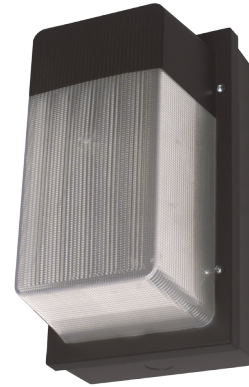
Brownlee Lighting does not recommend GU24 base lamps for 24 hour operation due to lamp manufacturer specifications.

Fluorescent fixtures utilizing an occupancy sensor should include a programmed start HPF ballast. Fluorescent lamps powered by instant start or rapid start ballasts, or GU24 base compact fluorescent lamps used in this application may result in severely shortened lamp life and/or ballast damage.

### MOUNTING

Directly to j-box (by others). Mounting hardware included.

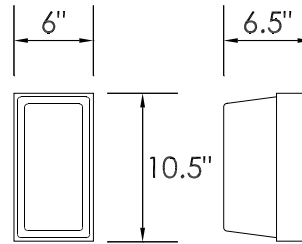
<b>PROJECT:</b>
<b>MODEL #:</b>
<b>FIXTURE TYPE:</b>



CPPBC diffuser



CPP diffuser



WET

## ORDERING INFORMATION

**7182** - \_\_\_\_\_ - \_\_\_\_\_ - \_\_\_\_\_  
 Model                      2.                      3.                      4. (if required)

### 2. WATTAGE

- 13Q** 1-13W Quad CFL, elec. HPF
- 213Q** 2-13W Quad CFL, elec. HPF
- 18Q** 1-18W Quad CFL, elec. HPF
- 26Q** 1-26W Quad CFL, elec. HPF
  
- 32T** 1-32W Triple CFL, elec. HPF
- 42T** 1-42W Triple CFL, elec. HPF
  
- 13G** 1-13W GU24 CFL, elec. NPF
- 18G** 1-18W GU24 CFL, elec. NPF
  
- 50S** 50W HPS, 120V NPF
- 70S** 70W HPS, 120V NPF

### 3. DIFFUSER

- STANDARD**
- CPP** Clear Prismatic Polycarbonate
  
- OPTIONAL**
- CPPBC** Clear Prismatic Polycarbonate with Bronze Cutoff

### 4. AVAILABLE OPTIONS

- BAC** Buy American Compliant
- ES** ENERGY STAR® (26Q only)
- PO1** Photo Control (120V)
- PO2** Photo Control (208V, 240V, 277V)
- T** Tamper Resistant Hardware and Tool

#### ACCESSORIES (field installed)

- BBR<sup>1</sup>** Remote Battery Backup (Q & T only)
- BBRC<sup>1</sup>** Remote Battery Backup, Cold Weather (Q & T only)

1) BBI & BBR options have an operating temperature of +32°F to +122°F. BBIC & BBRC options have an operating temperature of -4°F to +131°F. BBR & BBRC are field installed options available on all HPF fluorescent (CFL & T8) fixtures, except those with dimming ballasts. The maximum distance between the battery and the fixture is 10' for HPF ballasts.

### Specifications and dimensions subject to change without notice.

Consult your Brownlee Lighting representative for availability and ordering information.