

7028 LED

STANDARD SPECIFICATIONS

HOUSING

Die cast, 0.090" thick housing designed for rugged applications. The housing features an external mount plate that attaches directly to a j-box. The design of the fixture does not require opening the unit for any reason.

REFLECTOR

Formed aluminum, mounted in position with hardware.

LENS

Clear, tempered glass, installed in a hinged door with a continuous rubber seal.

LED PERFORMANCE - 3500K STANDARD

120-277V - 3500K, 82 CRI - L80 rating - 60,000 hrs - L70 rating (projected) - 100,000 hrs
 Amperage rated @ 110V input
 Operating ambient temperature: -20°C / -4°F - 40°C / 104°F
 The 7028 series features (1) B06 as an uplight.

Delivered 3500K lumens noted. Consult Brownlee.com for performance of all CCTs.

C37 - 36W nominal, .30 A input - 4705 lm. Dimmable (0-10V).
 C49 - 48W nominal, .40 A input - 6341 lm. Dimmable (0-10V).

MOUNTING

The 7028 is designed to be mounted directly to a standard j-box (by others).

FINISH

This series is available in a standard bronze polyester powder coat.

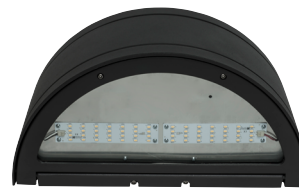
WARRANTY

5 year limited warranty on this LED product. Consult factory for details.

PROJECT:

MODEL #:

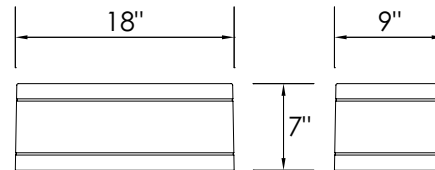
FIXTURE TYPE:



Downlight Component



Uplight Component



WET



ORDERING INFORMATION

7028

Model 2. 3. 4. (if required)

2. WATTAGE

C37 23W C Series LED (downlight)
 13W C Series LED (uplight)

C49 35W C Series LED (downlight)
 13W C Series LED (uplight)

Note: Refer to model 7027 LED for a downlight-only version of this product.

3. COLOR TEMPERATURE

35K 3500K standard color temperature

27K 2700K color temperature

30K 3000K color temperature

40K 4000K color temperature

4. AVAILABLE OPTIONS

BAC¹ Buy American Compliant

DTR⁴ Triac (Line Voltage) Dimming (120V)

ECW⁵ Extreme Cold Weather (-40°C / -40°F min.)

FCL⁷ French Canadian Labels

T24⁹ Title 24 Compliant (C49 in 3000K only)

Notes: (0) 90R - cannot be combined with ES or T24 (1) BAC - cannot be combined with FCL (2) BBI/BBS/BBC - cannot be combined with DTR, ECW, EXT, or T24 (3) BLD - cannot be combined with DTR, OCC, or T24 (4) DTR - cannot be combined with BBI, BBC, BBS, BLD or T24 (5) ECW - cannot be combined with BBI, BBC, or DTR (6) ES - cannot be combined with 90R, FCL, or T24 (7) FCL - cannot be combined with BAC, ES, or T24 (8) OCC - cannot be combined with BLD (9) T24 - cannot be combined with 90R, BBI, BBC, BBS, BLD, DTR, ES, or FCL (10) BBS - cannot be combined with BLD, DTR, ECW, EXT, OCC, or T24 (11) PCH/PC4 - cannot be combined with BLD or OCC

Add'l Notes: *BBI/BBS/BBC - standard BBI (and BBS) option has a minimum operating temperature of 10C/50F. BBC option has a minimum operating temperature of -20C/-4F. **BLD - Bi-Level Dimming is field adjustable from 100% to a dimmed light level of 10, 20, 30, or 50%. All units are factory set at 50%.

Specifications and dimensions subject to change without notice.

Consult your Brownlee Lighting representative for availability and ordering information.



REVISED
2020.04.20