

# PROFILE

## STANDARD SPECIFICATIONS

### ENDS

Molded resin acrylic, secured to the diffuser with a two part adhesive, and the diffuser assembly snaps in place over spring steel clips for tool less maintenance.

### HOUSING

Cold rolled steel, die-formed assembly. The housing can be mounted horizontal or vertical.

### DIFFUSER

UV stabilized white acrylic. The material can withstand minor impact without breaking.

### LED PERFORMANCE - 3500K STANDARD

120-277V - 3500K, 90+ CRI - L80 rating - 60,000 hrs - L70 rating (projected) - 100,000 hrs  
Amperage rated @ 110V input  
Operating ambient temperature: -20°C / -4°F - 40°C / 104°F

Delivered 3500K lumens noted. Consult Brownlee.com for performance of all CCTs.  
H16 - 16W nominal, .14 A input - 1763 lm. Dimmable (0-10V).  
H25 - 25W nominal, .20 A input - 2603 lm. Dimmable (0-10V).  
H32 - 32W nominal, .26 A input - 3490 lm. Dimmable (0-10V).

### MOUNTING

Fixture uses wall anchors (by others) appropriate for the mounting surface.

### FINISH

The 5038 series is available in all Brownlee paint finishes as a standard offering.

### WARRANTY

5 year limited warranty on this LED product. Consult factory for details.

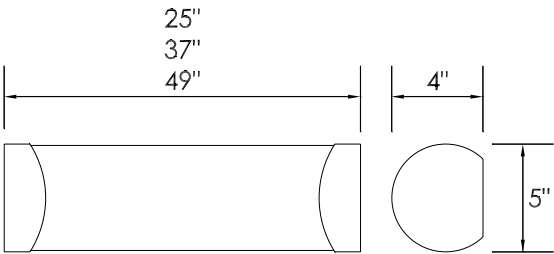
PROJECT:

MODEL #:

FIXTURE TYPE:



NT endcaps, WHA diffuser



DAMP



RoHS  
COMPLIANT  
ELECTRONICS



## ORDERING INFORMATION

**5038** - Model 2. 3. 4. 5. 6. (if required)

### 2. SIZE

25 L: 25"  
37 L: 37"  
49 L: 49"

### 3. ENDCAPS

#### STANDARD

BL Black  
BZ Bronze  
GM Gun Metal  
MB Metallic Bronze  
NT Nickel Tone  
WH White

#### CUSTOM

Provide color sample or RAL code to match

### 4. WATTAGE

#### 25 SIZE

H16 16W H Series LED

#### 37 SIZE

H25 25W H Series LED

#### 49 SIZE

H32 32W H Series LED

### 5. COLOR TEMPERATURE

35K 3500K standard color temperature  
30K 3000K color temperature  
40K 4000K color temperature

### 6. AVAILABLE OPTIONS

BAB<sup>1</sup> Build America, Buy America Compliant (BABAA)  
(Exclusions: BBI, DTR - contact factory)  
BAC<sup>1</sup> Buy American Compliant (BAA)  
BBI<sup>2\*</sup> Integral Battery Backup (8W)  
(H25 & H32 only)  
*Battery must be connected to continuous power supply within 7 Mo. of shipping. See Warranty Note 3.*  
DTR<sup>4</sup> Triac (Line Voltage) Dimming (120V)  
FCL<sup>7</sup> French Canadian Labels  
T24<sup>9</sup> Title 24 JA8 Compliant

**Universal Footnotes (only applies if superscript is shown in Options section):** (0) 90R - All LEDs/CCTs are being transitioned to 90 CRI standard over 2025. Inquire for this model's availability. (1) BAC/BAB - www.brownlee.com/resources/usa. (2) BBI/BBC - cannot combine with ECW or EXT. (3) BLD - integral microwave motion sensor (step-dim). Cannot combine with DTR. (4) DTR - cannot combine with BLD. (5) ECW - cannot combine with BBI, BBC, or DTR. (7) FCL - cannot combine with BAC. (8) OCC - integral microwave motion sensor (ON/OFF). (9) T24 - includes JA8 labeling and 90 CRI LEDs. (10) PCH/PC4 - cannot combine with BLD or OCC.

**Add'l Notes:** \*BBI/BBC - BBI minimum operating temp: 10C/50F unless otherwise stated. BBC minimum operating temp: -20C/-4F.

\*\*BLD - integral microwave motion sensor with step-dim control. 1: Motion is detected, illuminate to 100%.

2: Motion no longer detected, dim to set level. 3: Remain in continuous dimmed state or turn off after set period. Config. via onboard dip switches.

**Specifications subject to change without notice.**



BROWNLEE  
LIGHTING

www.brownlee.com

REVISED  
2024.12.27