

2168 LED



Nickel Tone (NT) finish

2168 LED

The 2168 LED is a classic surface-mounted bowl with a minimal finial in your choice of finish. This is a perfect companion to a variety of pendants in the Brownlee LED bowl series. A perfect fit for a variety of spaces from lobbies and entryways to foyers and corridors in applications such as libraries, schools, hotels and more. The diffuser rests just off the ceiling, providing a halo of uplight in addition to downlight.

TRIM FINISHES



2168 LED

STANDARD SPECIFICATIONS

BOWL

Smooth UV stabilized white acrylic. The 24" bowl is formed from 0.188" material, while the 30" bowl utilizes 0.250" stock.

TRIM

A solid brass finial holds the acrylic bowl in position.

HOUSING

Formed, cold rolled steel design, finished in a high reflectance powder coat white.

LED PERFORMANCE - 3500K STANDARD

120-277V - 3500K, 82 CRI - L80 rating - 60,000 hrs - L70 rating (projected) - 100,000 hrs
 Amperage rated @ 110V input
 Operating ambient temperature: -20°C / -4°F - 40°C / 104°F

Delivered 3500K lumens noted. Consult Brownlee.com for performance of all CCTs.

C24 - 23W nominal, .20 A input - 2958 lm. Dimmable (0-10V).

C37 - 35W nominal, .30 A input - 4460 lm. Dimmable (0-10V).

C49 - 45W nominal, .40 A input - 5916 lm. Dimmable (0-10V).

MOUNTING

Directly to j-box (by others). Mounting hardware included.

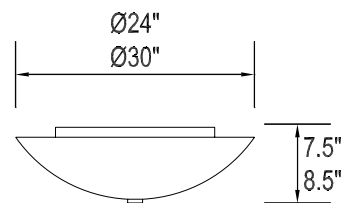
FINISH

The finial is available in all Brownlee paint finishes as a standard offering.

WARRANTY

5 year limited warranty on this LED product. Consult factory for details.

PROJECT:
MODEL #:
FIXTURE TYPE:



ORDERING INFORMATION



DAMP



2168 - _____ - _____ - _____ - _____ - _____ - _____
 Model 2. 3. 4. 5. 6. (if required)

2. SIZE	3. FINISH	4. WATTAGE	5. COLOR TEMPERATURE	6. AVAILABLE OPTIONS	
24 30	24" dia. 30" dia.	STANDARD BL Black BZ Bronze GM Gun Metal MB Metallic Bronze MG Metallic Gold NT Nickel Tone PL Platinum WH White CUSTOM Provide color sample or RAL code to match	24 SIZE C24 23W C Series LED C37 35W C Series LED C49 45W C Series LED 30 SIZE C37 35W C Series LED C49 45W C Series LED	35K 3500K standard color temperature 27K 2700K color temperature 30K 3000K color temperature 40K 4000K color temperature	90R⁰ 90 CRI (3000K only) BAC¹ Buy American Compliant BLD³ Bi-Level Dimming DTR⁴ Triac (Line Voltage) Dimming (120V) ES⁶ ENERGY STAR® (Not available in 90 CRI) FCL⁷ French Canadian Labels OCC⁸ Occupancy Sensor T24⁹ Title 24 Compliant (C24 & C49 in 3000K only)

Notes: (0) **90R** - cannot be combined with ES or T24 (1) **BAC** - cannot be combined with FCL (2) **BBI/BBS/BBC** - cannot be combined with DTR, ECW, EXT, or T24 (3) **BLD** - cannot be combined with DTR, OCC, or T24 (4) **DTR** - cannot be combined with BBI, BBC, BBS, BLD or T24 (5) **ECW** - cannot be combined with BBI, BBC, or DTR (6) **ES** - cannot be combined with 90R, DTR, FCL, or T24 (7) **FCL** - cannot be combined with BAC, ES, or T24 (8) **OCC** - cannot be combined with BLD (9) **T24** - cannot be combined with 90R, BBI, BBC, BBS, BLD, DTR, ES, or FCL (10) **BBS** - cannot be combined with BLD, DTR, ECW, EXT, OCC, or T24 (11) **PCH/PC4** - cannot be combined with BLD or OCC

Add'l Notes: ***BBI/BBS/BBC** - standard BBI (and BBS) option has a minimum operating temperature of 10C/50F. BBC option has a minimum operating temperature of -20C/-4F. ****BLD** - Bi-Level Dimming is field adjustable from 100% to a dimmed light level of 10, 20, 30, or 50%. All units are factory set at 50%.

Specifications and dimensions subject to change without notice.

Consult your Brownlee Lighting representative for availability and ordering information.



REVISED
2020.02.12